

Hybrid Motor With Batteryless Absolute Encoder

M23PM-K

Minebea

Outline

56mm \square

1.8°/step

UNIT: $\frac{\text{mm}}{\text{inch}}$

Model	"M"	"L"
M23KMK358x	50.0(2.0)	64.0(2.52)
M23KMH049x	55.0(2.17)	69.0(2.72)
M17PMH744x	77.0(3.03)	91.0(3.58)

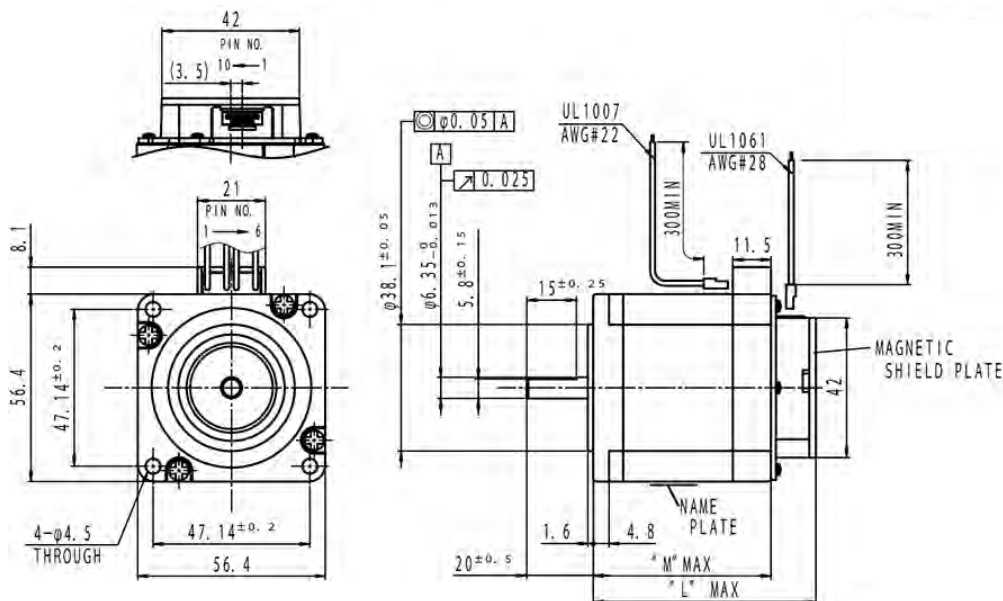


For Motor

PIN NO.	1	2	3	4	5	6
L/W Color	Org	-	Blu	Yel	-	Red
Phase	\bar{B}	-	B	\bar{A}	-	A

For Encoder

PIN NO.	1	2	3	4	5	6	7	8	9	10
L/W Color	Red	Prl	Gry	Wht	Grn	Brn	Yel	Blu	Org	Blk
Signal	Vcc	RS485-	RS485+	PA	NA	PB	NB	PZ	NZ	GND



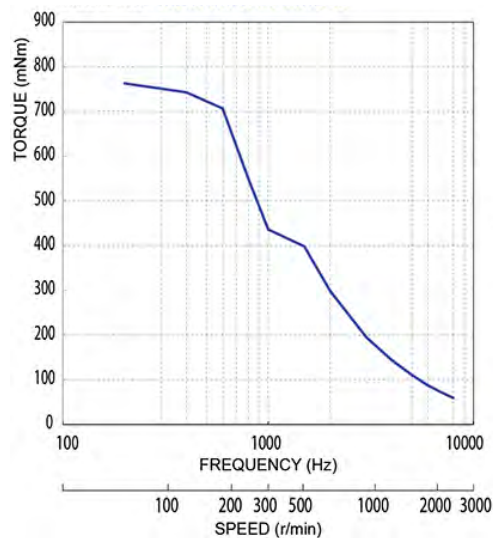
Specifications

MODEL	Step Angle	Drive Sequence	Rated Current	Resistance	Holding Torque	Inductance	Rotor Inertia	Detent Torque	Encoder Resolution	Mass	Max. Turn Count
	(deg)		(A)	(Ohms)	(mNm)	(mH)	(g·cm ²)	(mNm)	CPR		
M23KMK358CMB03	1.8	BI-POLAR	1.7	1.9	800	7.8	180	29	4000	660	1000
M23KMH049CMB03	1.8	BI-POLAR	2.0	0.9	1300	3.7	320	54	4000	750	1000
M23KMH744CMB03	1.8	BI-POLAR	3.0	0.7	1800	2.8	490	93	4000	1130	1000

Torque / Speed Characteristics

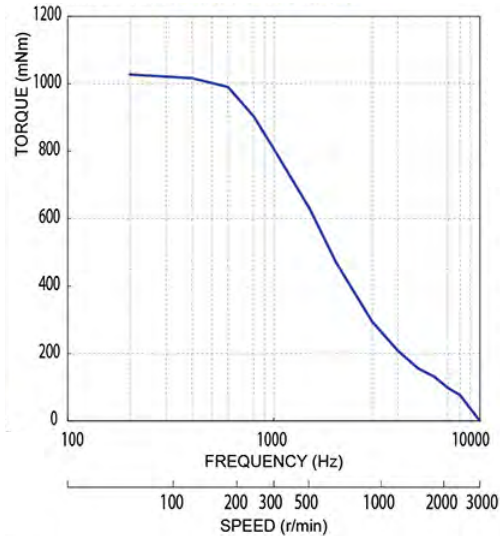
Model No: M23KMK358CMB03

Driver: Chopper Dual
Supply Voltage: 24.0 (Volt)



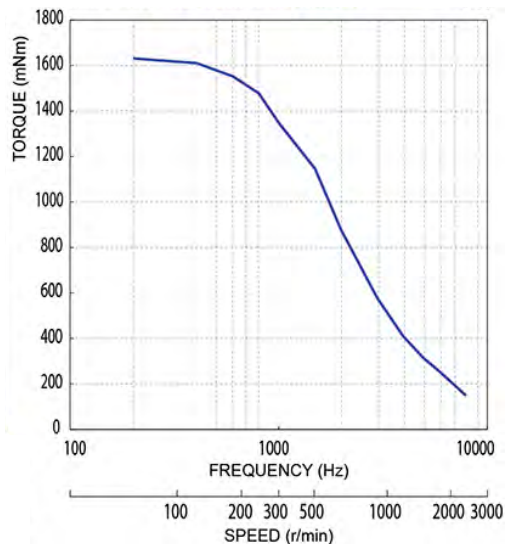
Model No: M23KMH049CMB03

Driver: Chopper Dual
Supply Voltage: 24.0 (Volt)



Model No: M23KMH744CMB03

Driver: Chopper Dual
Supply Voltage: 24.0 (Volt)



M17PM-K

Outline

42mm \square

1.8°/step

UNIT: $\frac{\text{mm}}{\text{inch}}$

Model	"M"	"L"
M17PMK340x	38.0(1.50)	52.0(2.05)
M17PMK440x	48.0(1.89)	62.0(2.44)
M17PMFA34x	60.0(2.36)	74.0(2.91)

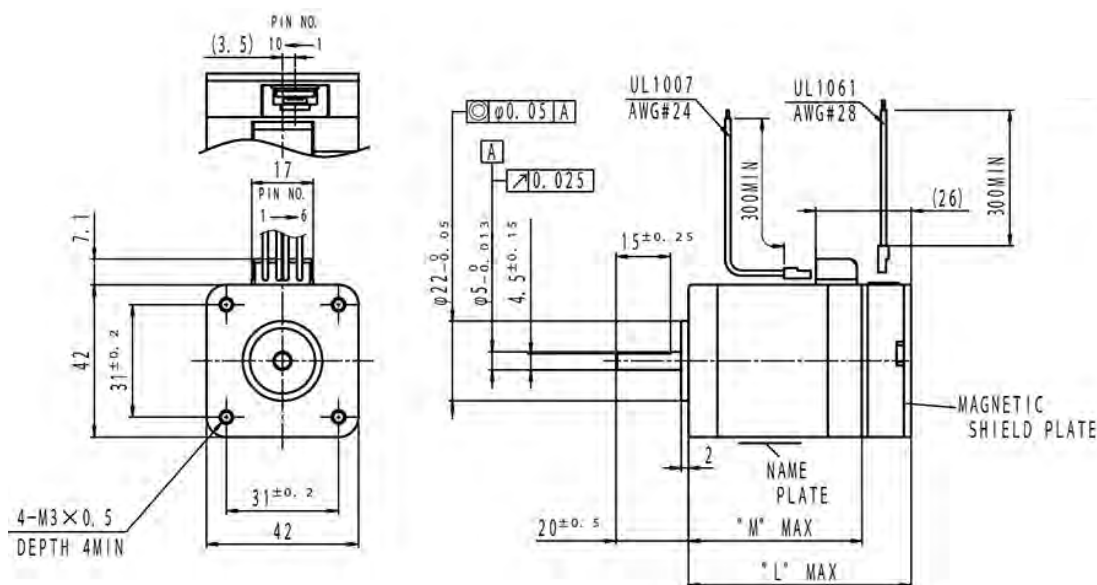


For Motor

PIN NO.	1	2	3	4	5	6
L/W Color	Yel	-	Red	Blu	-	Org
Phase	\bar{A}	-	A	B	-	\bar{B}

For Encoder

PIN NO.	1	2	3	4	5	6	7	8	9	10
L/W Color	Red	Prl	Gry	Wht	Grn	Brn	Yel	Blu	Org	Blk
Signal	Vcc	RS485-	RS485+	PA	NA	PB	NB	PZ	NZ	GND



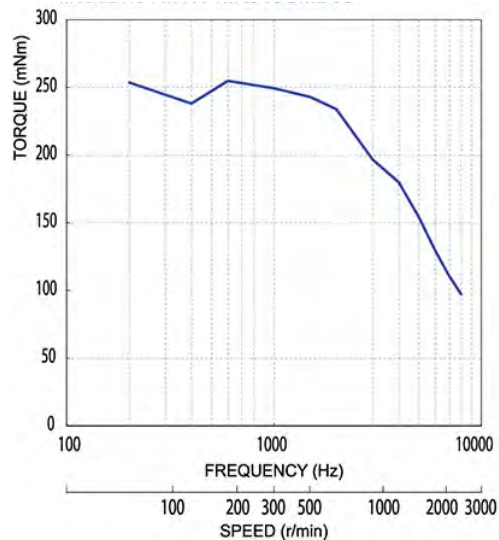
Specifications

MODEL	Step Angle	Drive Sequence	Rated Current	Resistance	Holding Torque	Inductance	Rotor Inertia	Detent Torque	Encoder Resolution	Mass	Max. Turn Count
	(deg)										
M17PMK340CMB03	1.8	BI-POLAR	2.0	0.9	290	2.0	50	11	4000	320	1000
M17PMK440CMB03	1.8	BI-POLAR	2.0	1.2	510	2.6	75	16.7	4000	420	1000
M17PMFA34CMB03	1.8	BI-POLAR	2.6	1.0	690	1.5	162	30	4000	580	1000

Torque / Speed Characteristics

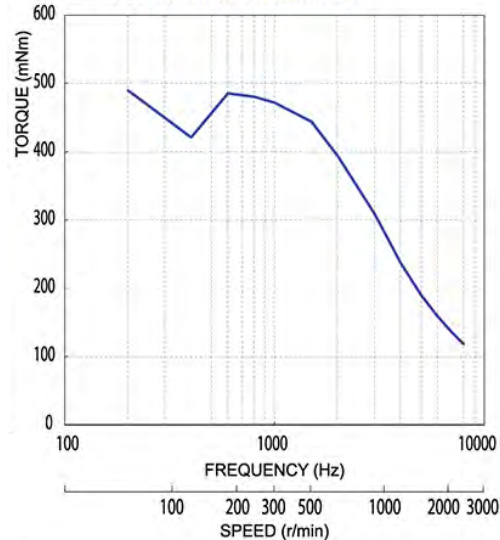
Model No: M17PMK340CMB03

Driver: Chopper Dual
Supply Voltage: 24.0 (Volt)



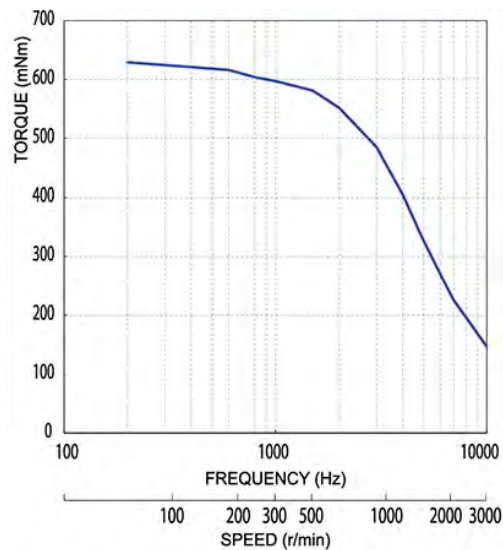
Model No: M17PMK440CMB03

Driver: Chopper Dual
Supply Voltage: 24.0 (Volt)



Model No: M17PMFA34CMB03

Driver: Chopper Dual
Supply Voltage: 24.0 (Volt)



Hybrid Motor With Batteryless Absolute Encoder

M11PM-K

Minebea

Outline

28mm \square

1.8°/step

UNIT: $\frac{\text{mm}}{\text{inch}}$

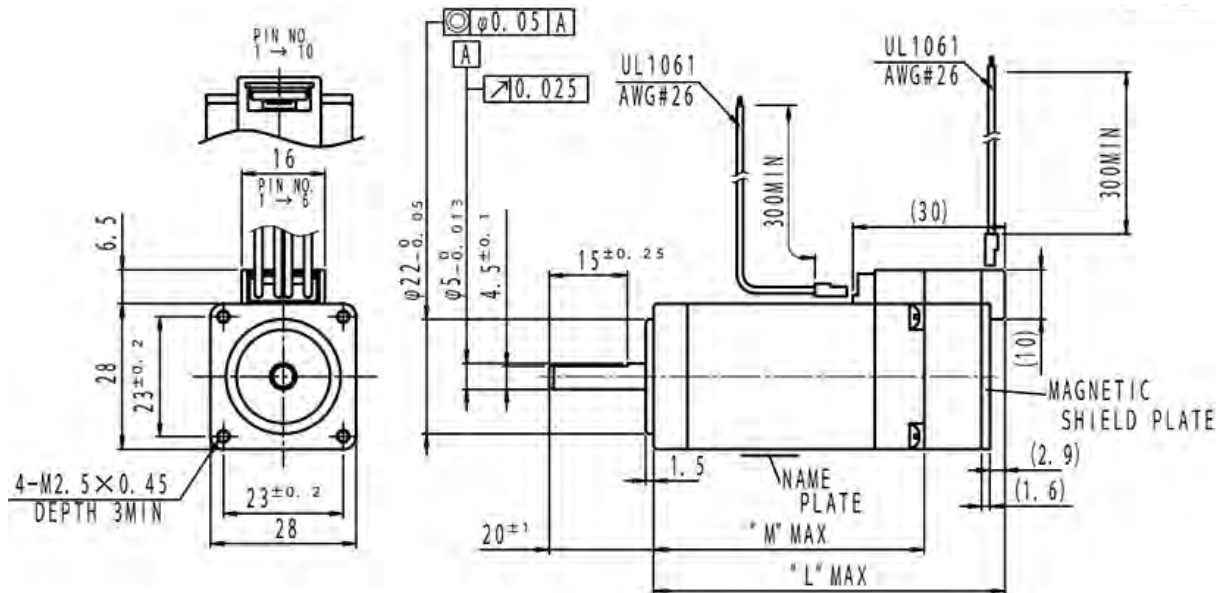
M11PM-K043x	32.5(1.28)	49.0(1.93)
M11PM-K142x	41.0(1.61)	57.0(2.24)
M11PM-K241x	52.0(2.05)	68.0(2.68)

For Motor

PIN NO.	1	2	3	4	5	6
L/W Color	Blu	-	Org	Red	-	Yel
Phase	B	-	\bar{B}	A	-	\bar{A}

For Encoder

PIN NO.	1	2	3	4	5	6	7	8	9	10
L/W Color	Red	Prl	Gry	Wht	Grn	Brn	Yel	Blu	Org	Blk
Signal	Vcc	RS485-	RS485+	PA	NA	PB	NB	PZ	NZ	GND



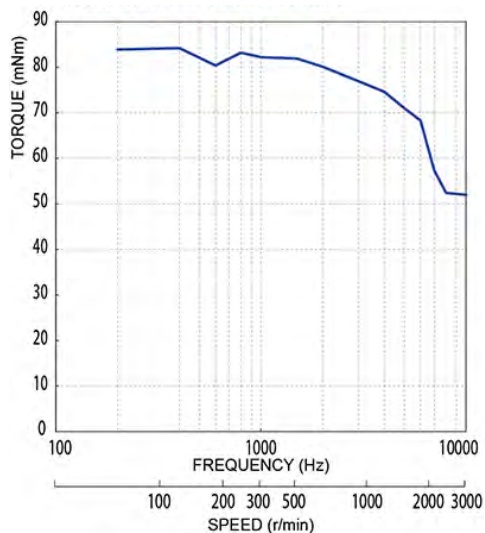
Specifications

MODEL	Step Angle	Drive Sequence	Rated Current	Resistance	Holding Torque	Inductance	Rotor Inertia	Detent Torque	Encoder Resolution	Mass	Max. Turn Count
	(deg)										
M11PMK043CMB03	1.8	BI-POLAR	1.5	1.3	100	1.2	8.0	4.4	4000	170	200
M11PMK142CMB03	1.8	BI-POLAR	1.5	1.5	145	1.2	13.0	5.4	4000	200	200
M11PMK241CMB03	1.8	BI-POLAR	1.5	1.7	200	1.8	16.0	8.0	4000	270	200

Torque / Speed Characteristics

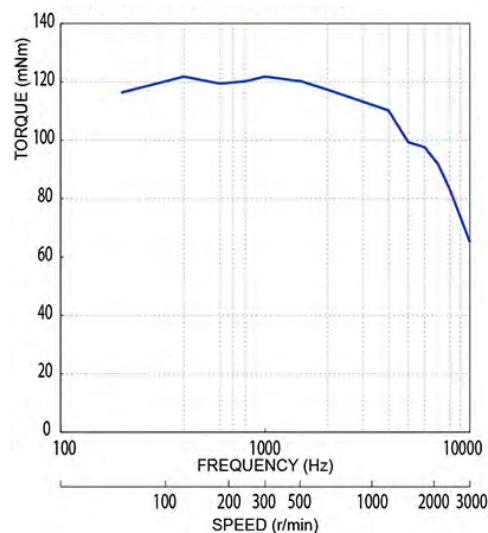
Model No: M11PM-K043CMB03

Driver: Chopper Dual
Supply Voltage: 24.0 (Volt)



Model No: M11PM-K142CMB03

Driver: Chopper Dual
Supply Voltage: 24.0 (Volt)



Model No: M11PM-K241CMB03

Driver: Chopper Dual
Supply Voltage: 24.0 (Volt)

